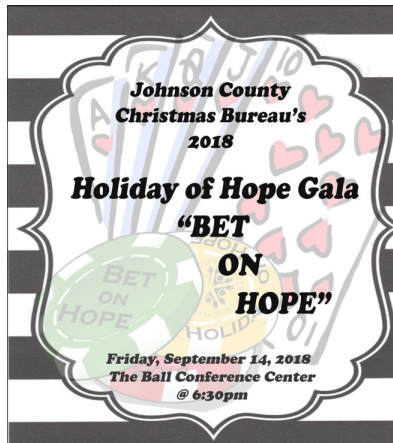


JCCB Newsletter August 2018  
Celebrating the Beginning of Holiday Shop Season



JOHNSON COUNTY  
CHRISTMAS BUREAU



**Appetizers, Beverages, Dinner**

**Entertainment by Jazz for Good**

**Casino games:  
Blackjack, Craps, Roulette,  
Wheel of Fortune**

**Live & Silent Auctions:  
Condo stays, jewelry, dining & wine  
packages, much more**

The Holiday of Hope Gala is critical to our mission of providing warmth and support to low-income Johnson County neighbors. Proceeds are used to purchase coats, groceries, personal care items, gifts and more for nearly 12,000 low-income neighbors from over 3,200 families.

Please help us help our neighbors while having a great time at Bet on Hope!

**TICKETS**

## Bet on Hope Sponsors

*commitments as of August 15, 2018*

Boyer & Corporon Wealth Management  
CenturyLink

Ball Conference Center  
Hallmark  
Leawood Rotary Foundation

Ascension Catholic Church  
Sterck Barnes  
Commerce Bank  
InStore Design Display  
Kansas Gas Service  
Midtec Associates, Inc.  
James E. Owens

Bob D. Campbell & Company  
Brian Anselmo Memorial Foundation  
First National Bank  
Larry & Ruth Bigus  
Doug & Karen Boyd  
Maxine Burner  
Betty & Bill Cummings  
HomeAdvisor  
Jerry & Joy Kaplan  
Kay King  
William Koenigsdorf  
John & Julie Mills  
Frank Slovick & Susan Mou  
Rosedale Auto Sales, Inc.  
Jim & June Winter  
Mark & Kristin Welch

**Please help us help our  
neighbors by becoming a Holiday  
of Hope Sponsor.**

**SPONSOR**

**Please Act Now!  
This is our largest fundraising event  
of the year and it's just 3 weeks away!**

## Book Department Team Members Needed

The Book Department needs volunteer team members to start immediately.

Duties include assisting with book donation drives and to sort and inventory books. The Book Department will also need volunteers to help in the department at Shop and to inventory at the end of Shop.

**Please contact us to learn more.**



---

## Pre-Shop Space Needed



We are seeking space for our volunteers to use prior to the Holiday Shop to store and sort groceries coming in from food drives.

The ideal space will be 1,000 sq ft, climate-controlled, offer 24/7 access to our volunteers and available from mid-September through move-in to Shop. **Please contact us if you can help.**

---

## Holiday Shop November 30 - December 8, 2018

October 1: Online volunteer signup opens  
Move-in: mid-November. Move-out: mid-December

The search for a location will begin after Labor Day. Landlords will not commit to JCCB until Fall in the event their space will be purchased or leased.

We are a volunteer-driven grass-roots charity. No government support is received. We rely on support from the community - from neighbors such as yourself.



**Holiday of Hope Gala**  
September 14, 2018  
Ball Conference Center  
Olathe, KS

**Festival of Trees**  
November 15-18, 2018  
Holiday Boutique, Overland  
Park Convention Center

**Holiday Shop**  
Nov. 30 - Dec. 8, 2018  
Location to be announced.

---

Shop at [smile.amazon.com](https://smile.amazon.com).



Select Johnson County Christmas Bureau  
as your charity of choice; we receive a

donation of .05% of your purchase!

Johnson County Christmas Bureau  
913 341 4342 | [www.jccb.org](http://www.jccb.org)

Our Mission

- Provide warmth and support, during the winter holiday season, to low-income Johnson County, Kansas families;
- Increase awareness and understanding of poverty in Johnson County, Kansas;
- Give neighbors an outlet to help neighbors.

JCCB provides services to low-income Johnson County neighbors without regard to religion, race or ethnicity.

STAY CONNECTED

