

## Annual Report for 2018

In 2018, we gave warmth and support to nearly 12,000 low-income neighbors. Our Annual Report details this success as we continue planning for the 2019 Holiday Shop.



### *In the Report:*

#### **Why We Help**

Families without adequate income face daily hardships including hunger, poor housing conditions, lack of health care, forgone doctor visits, and more.

#### **Who We Help**

Our clients are single moms, veterans, survivors of domestic abuse, neighbors seeking employment - families like ours that never thought they would need help.

[View Annual Report](#)

### **How We Help**



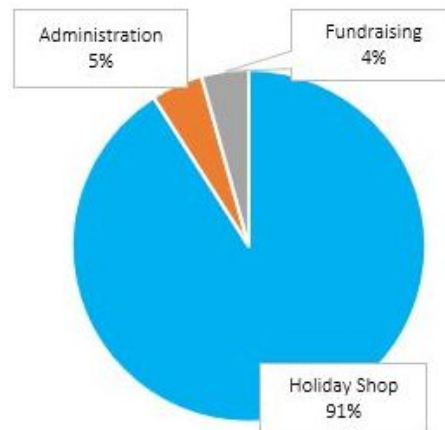
### **Our Volunteers**

"I had no idea how grateful I am to have presents to open on Christmas morning. Johnson County Christmas Bureau increased my awareness for those who are less fortunate than I am, and I am so glad that I volunteered this year!" 2018 Holiday Shop Volunteer

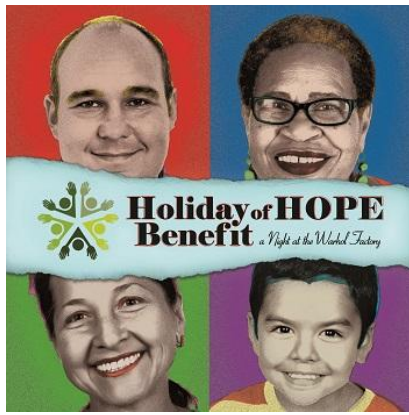
### **Community Support**



### **Financial Snapshot**



[View Annual Report](#)



**Moving Forward**



More information about Holiday of HOPE and Festival of Trees at [jccb.org/events](http://jccb.org/events).

**STAY CONNECTED:**



**Shop at [smile.amazon.com](http://smile.amazon.com).**

Select Johnson County Christmas Bureau as your charity of choice and we receive a donation of .05% of your purchase!



Johnson County Christmas Bureau  
913 341 4342 | [www.jccb.org](http://www.jccb.org)

**Our Mission**

- Provide warmth and support, during the winter holiday season, to low-income Johnson County, Kansas families;
- Increase awareness and understanding of poverty in Johnson County, Kansas;
- Give neighbors an outlet to help neighbors.

JCCB provides services to low-income Johnson County neighbors without regard to religion, race or ethnicity.

