



## Our Impact

Our clients are single moms, veterans, survivors of domestic abuse, neighbors seeking employment... families just like ours that never thought they would need help.

"Gloves are so important and thanks to them my son made a friend in our neighborhood because he had gloves to play in the snow and build a fort. Without gloves he couldn't have gone outside." 2018 Holiday Shop Client

This is just one example of the **impact** of what our clients receive at the Holiday Shop. The interaction between clients and volunteers is what really makes the Holiday Shop special. Here is just one example of the impact of **volunteer engagement** at the Holiday Shop:

"Everyone was so kind and helpful. It is not easy knowing I cannot provide gifts and such for my family, but I never once felt less than or pitied by anyone from The Johnson County Christmas Bureau. I just felt loved and grateful for the kindness." 2018 Holiday Shop Client

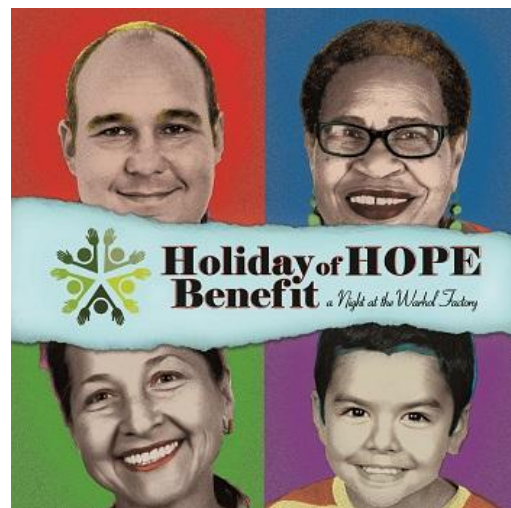
## Holiday of HOPE Benefit: A Night at the Warhol Factory

Friday, September 27, 2019

JOCO Arts & Heritage Center  
8788 Metcalf, Overland Park

Entertainment Begins at 6:00 pm  
Dinner Served at 7:00 pm

- Silent & Live Auctions
- Live Painting Performance by Michael Debus
- DJ & Dancing
- Open Bar featuring a signature cocktail



**Sponsorships available now!**  
Includes event tickets as well as recognition at the event, at [jccb.org](http://jccb.org), and in our Annual Report.

**Ticket sales open in July.** This is our largest fundraising event of the year. JCCB operates with a very low 9% administrative and fundraising percentage based on the

United Way formula, so the funds we raise directly support our clients.

**Planning team volunteers needed** to help the decor team design/obtain/make decorations. [Contact the office if you'd like to help.](#) 913 341 4342



## Decorating Space Needed

The Johnson County Christmas Bureau Festival of Trees Charity Auction is in need of **600-800 sq feet of space for our decorating team** to "do their magic." The space would be **used from Labor Day - November 12.**

The Festival of Trees Charity Auction takes place at the Overland Park Convention Center in partnership with the Holiday Boutique. All proceeds help to purchase needed items for the Holiday Shop.

If you have space available or if you have a lead on possible space please contact the office by [email](#) or phone, 913 341 4342. Thank you for helping us to get the word out.

Barbara Kopack Hill, JCCB Festival of Trees Chair

## HOPE Grows Here Breakfast



**The HOPE Grows Here Breakfast on June 7 was a success!** Guests learned about poverty in Johnson County, the Christmas Bureau and what we do. We raised new friends as donors and volunteers.

Special thanks to Johnson County Community College for donating use of the Capital Federal Room at the Regnier Center and to our Table Hosts for making this event a success.



## Volunteers Needed July 26th

The Olathe Mayor's Christmas Tree Fund is one of our largest grantors. Every year we help Mayor Copeland and his team at the annual concert to collect donations for the Fund.



## Book Drive

**Donation barrel available through July 1st**

**Olathe Community Center**

This year's concert is on the evening of **Friday, July 26 at Stagecoach Park**, SW corner of Ridgeview Road and Kansas City Road. More information on the concert coming soon.

If you can volunteer to help with collections, [please contact JCCB to join us at the event.](#) 913 341 4342

**1205 E. Kansas City Road**

**Accepting new or gently used books for children, teens & adults.**

---

**STAY CONNECTED:**

**VOLUNTEER**



**DONATE**

**Shop at [smile.amazon.com](https://smile.amazon.com).**

Select Johnson County Christmas Bureau as your charity of choice and we receive a donation of .05% of your purchase!



**Johnson County Christmas Bureau**  
913 341 4342 | [www.jccb.org](http://www.jccb.org)

**Our Mission**

- Provide warmth and support, during the winter holiday season, to low-income Johnson County, Kansas families;
- Increase awareness and understanding of poverty in Johnson County, Kansas;
- Give neighbors an outlet to help neighbors.

JCCB provides services to low-income Johnson County neighbors without regard to religion, race or ethnicity.

